

FEATURE:

- Designed to meet IR requirement
- Environmental: At 235°C in 1 minute
- 350uH OCL With 8mA DC bias applied
- 1500 Vrms isolation
- Specifications: At 25°C

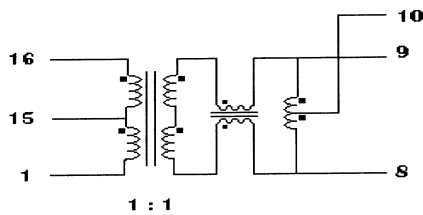
APPLICATION:

- 100 Mps transmission in support of National Semiconductors
- AMD
- Level One and other chip manufacturers

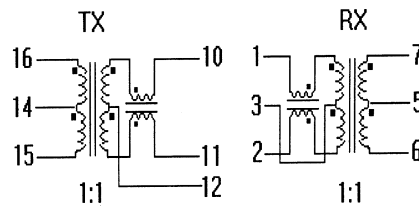
Part No.	Insertion Loss (dB) Max 1~125 MHz	Return Loss (dB Min) MHz		Cross talk (dB Min) MHz		CMRR (dB Min) MHz		SCHEMATICS
		1~60	60~100	1~60	60~100	1~60	60~100	
HA-001	-1.0	-15	-14			-35	-32	A
HA-002	-1.0	-15	-14	-40	-38	-35	-32	B
HA-002A	-1.0	-15	-14	-40	-38	-35	-32	C
HA-003	-1.0	-15	-14	-40	-38	-35	-32	D
HA-003A	-1.0	-15	-14	-40	-38	-35	-32	E

Part No.	OCL (uH) Min	LL (uH) Max	CWW (pF) Max	DCR (Ω) Max	SCHEMATICS
HA-005	350	0.3	16	0.35	F
HA-006	350	0.4	20	0.9	G

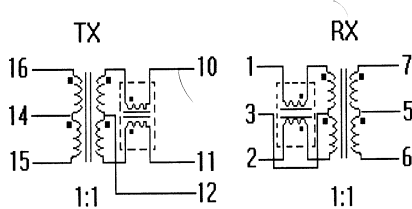
A



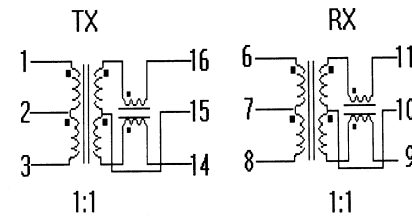
B



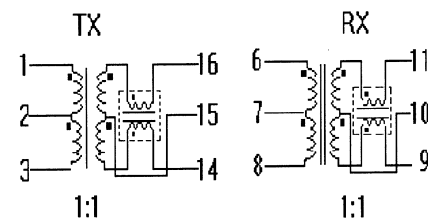
C



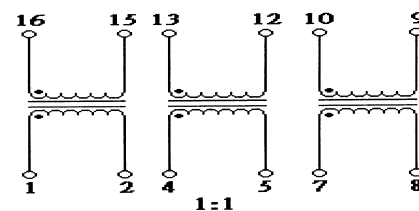
D



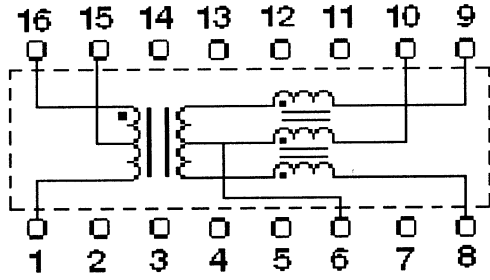
E



F

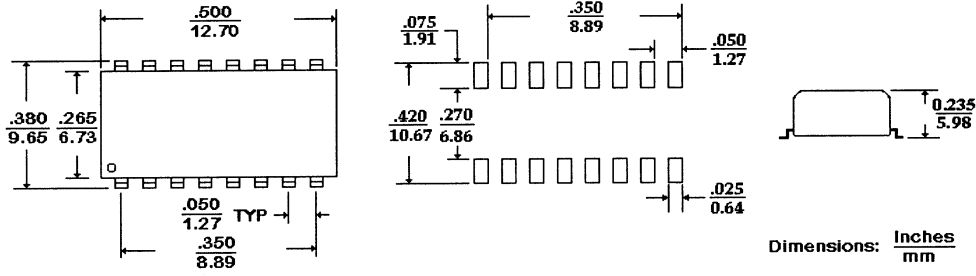


G



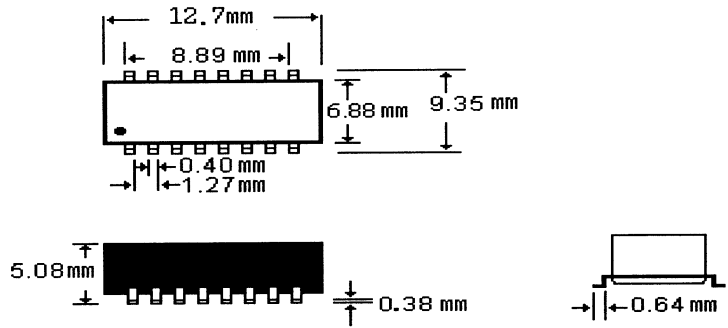
DIMENSION:mm(INCH) TOLERANCE:±0.25(0.010)

A / B / C / D / E

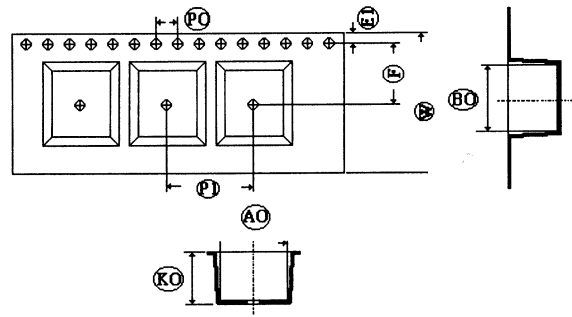


DIMENSION:mm(INCH) TOLERANCE:±0.25(0.010)

F/G



PACKAGING SPEC:



DIMENSION	W	P1	P0	E1	F	AO	BO	KO
SPEC.	24.00	16.00	4.00	1.75	11.50	10.25	13.35	6.35
+/-	0.30	0.10	0.10	0.10	0.10	0.10	0.10	0.10

Tape & reel-----600/reel
 Tube-----39/tube

TEMP CURVE (IR REFLOW)

